

MYST SPECIFICATIONS

TYPICAL APPLICATIONS

- Exterior Areas
- Industrial Areas
- Accent Lighting for Building and Fountain Areas
- Parking Garages
- Loading docks
- Cleanrooms
- Oil Rigging Areas (Non-Explosion Proof Areas)

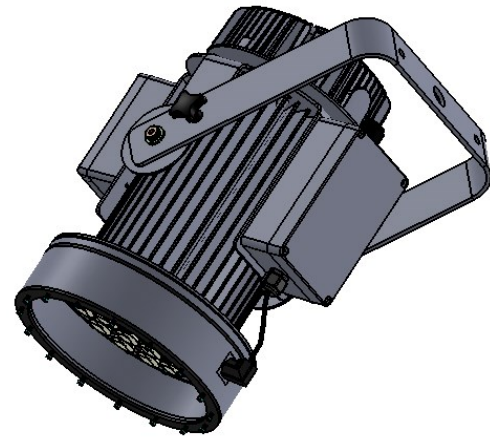
OPTICAL

- 3,000K, 4,000K or 5,000K color temperatures available
- 90 CRI available for additional cost
- 14, 18, 28, 36, 70 and 110 degree lens

PHYSICAL

- 9 1/2" diameter, 17 15/16" length
- High performance LED engine
- High performance LED driver
- High performance power supply
- High efficiency heat sink (no internal fans needed)
- Sealed LED Array
- Mounting options available
- ETL listed to UL and cUL standards
- Weight: 22 lbs.

Notes:



PROJECT- _____
ORDER CODE- _____
QUANTITY- _____

ELECTRICAL

- Available Wattages 75W, 100W, 125W, 165W
- 120V, 277V, 50/60Hz
- L70 rating > 70,000 hours
- IP65 rated
- Optional surge protector

CONTROLS

- Constant (on/off)

Ordering Code Example: M-150-30-36-C-B-M-4(12'')-515-90

Type	Watts	Color Temp.	Degree Lens	Control	Unit Color	Color Finish	Mount*	Power Connector*	Optional* (can choose multiple)
M									
	75	30-3000K	14*	C- Constant	B- Black	M- Matte	1- C-Clamp	B- Bare ends (5' Standard)	90- CRI (only available for below 4000K)
	100	40-4000K	18*				2- Flush	515- NEMA 5-15 (125V/15A)	S1- Surge Protector 120V
	125	50-5000K	28*				3- Yoke	L515- NEMA L5-15 (125V/15A, Locking-type)	S2- Surge Protector 220V
	165	C- Custom*	36				4- Rigid Pendant (note length)	715- NEMA 7-15 (277V/15A)	N- None
			70				5- Pendant Slope Adaptor (note length)	L715- NEMA L7-15 (277V/15A, Locking-type)	
			110				6- Air Craft Cable Pendant (note length)	N- None	

*May extend lead time and/or additional cost

